

Uniform Guide

Index

P 3-4 Uniform Items List

P 12-14

Winter Academic Options

P 5-8 Summer Academic Options

P 15 - 16

Personal Items

P 9-11 Sports Options

[Find Notre Dame College uniform at NOONE](#)



Items List



Pullover



Blazer



Classic Shirt



Tailored Shirt



Soft Shell Jacket



Flat Front Trouser



Flat Front Shorts



Skirt



Scarf



Socks



Summer Dress



Long Sleeve Dress



Tie



Tights



Items List



Long Sleeve Polo



PE Shorts Regular



PE Trackpants



Short Sleeve Polo



PE Shorts Long



Hat



Quarter Zip Top



PE Shorts Dawn



School Backpack

Year 12 only items



Navy Pullover



Rugby Jumper



Summer Academic - Option 1

Pictured



Can be worn with





Summer Academic - Option 2

Pictured



Can be worn with





Summer Academic - Option 3

Pictured



Can be worn with



Summer Academic - Option 4



Pictured



Can be worn with





Sports Uniform - Option 1

Pictured



Can be worn with



Sports Uniform - Option 2



Pictured



Can be worn with



Sports Uniform - Option 3



Pictured



Can be worn with



Winter Academic - Option 1



Pictured



Can be worn with



Optional

Winter Academic - Option 2



Pictured



Can be worn with



Optional





Winter Academic - Option 3

Pictured

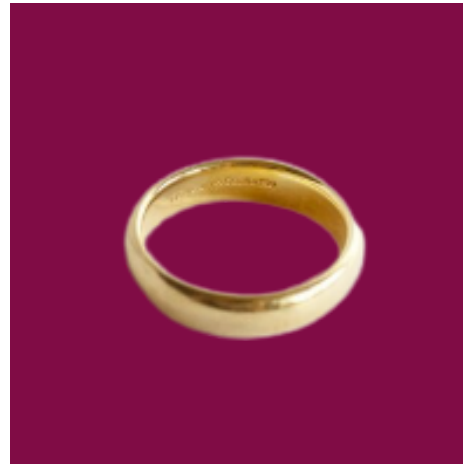


Can be worn with



Optional

Personal items for students



Jewellery

- A watch
- One small flat ring
- A fine chain necklace with or without a small religious medal
- Two small gold or silver sleepers or studs per ear
- Small clear facial studs (not visible)

Personal items for students

Hair and Body

- Hair accessories in school colours: maroon, sky blue and navy
- Hair styles and colours should be natural and appropriate
 - *Dreadlocks and Mohawks are examples of what is considered inappropriate
- Students are expected to be clean shaven
 - *However, if for religious reasons this is not possible, you must make an appointment with the Principal for this to be approved
- Tattoos are discouraged and are to be kept covered.
- Make-up is discouraged, but if worn should be natural and unobtrusive.
- Nails should be natural or with clear nail polish.