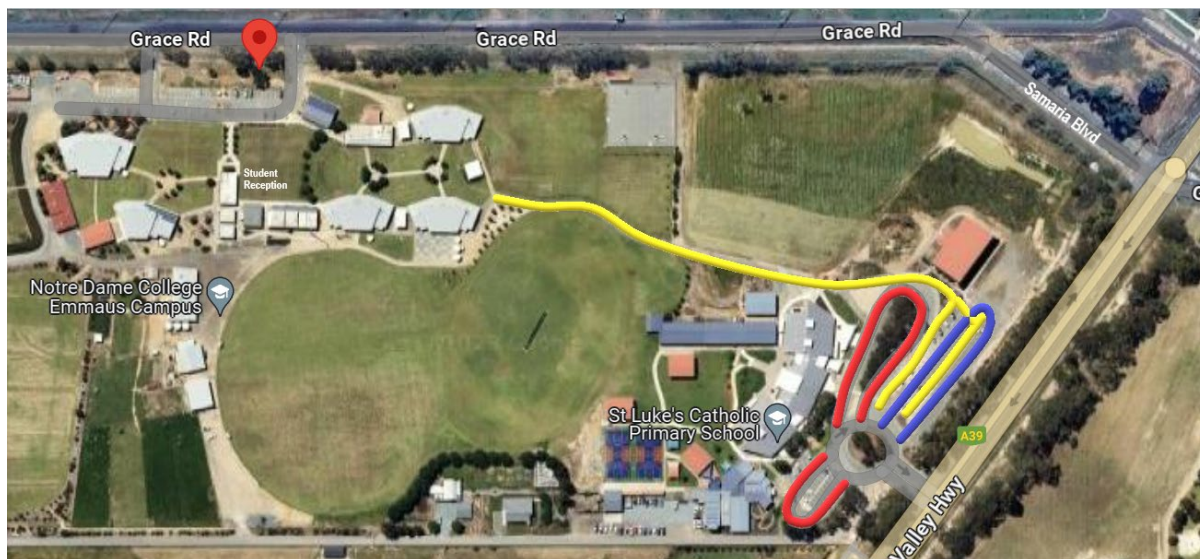


YEAR 9 2025 TRAVEL TO EMMAUS

We are excited to welcome you and your child to the Emmaus Campus for Year 9. To ensure a safe, smooth and enjoyable transition for all, please see below essential information regarding bus travel and school drop-off / pick-up procedures.

STUDENT DROP OFF / PICK UP



Access to the designated drop-off and pick-up zone is via the entrance to St. Luke's Primary School. To ensure the safety of students, parents, and staff, please follow the guidelines below for Year 9 drop-off and pick-up as outlined in the map above:

- Blue Zone: This is the only permitted area for parking, drop-off, and pick-up for Year 9 students.
- Red Zones: These areas are strictly off-limits and designated for St. Luke's parents and buses only. Do not enter these zones.

Parents/guardians must not stop in the roundabout at any time, even when traffic is halted, to drop off or pick up students.

When arriving or departing, students must use the designated footpath (marked in yellow) to access Emmaus or your vehicle. Walking through the car park or bus zone is strictly prohibited.

Parents/guardians are not permitted to use the staff car park (via Grace Road) for morning drop-offs or afternoon pick-ups. This area must remain clear at all times for staff and delivery vehicles. Exceptions include:

- Dropping off or picking up between 9:00 AM and 2:45 PM.
- Students on crutches or requiring special assistance.

If you are called to collect your child from Sick Bay or if they have a Leave Pass, you must come into Student Reception to sign them out. Students are not allowed to walk to the St. Luke's Bus Stop or wait in the staff car park for collection.

STUDENTS TRAVELLING TO AND FROM SCHOOL BY BUS

Existing School Bus Programme Travellers

Students using the School Bus Programme travelling to the Emmaus Campus:

Students whose usual bus stops at St. Luke's/Emmaus Campus will alight there and return home directly from the campus. The buses with this direct route are:

- Bus 3 – Bunbartha (Morning only)
- Bus 10 – Dunbulbalane
- Bus 17 – Marungi - Zeerust

For those students who arrive at NDC Skene Street interchange they can catch:

- Morning - Bus 1 (8:25am from Bay 1) | Afternoon - departs 3:25pm, arrives at Skene St (3:45pm, Bay 1)
- Morning - Bus 22 (8:25am from Bay 4) | Afternoon - departs 3:20pm, arrives at Skene St (3:35pm, Bay 4)
- Morning - Bus 30 (8:35am from Bay 9) | Afternoon - departs 3:25pm, arrives at Skene St (3:40pm, Bay 10)
- Morning - Bus 33 (8:30am from Bay 2) | Afternoon - departs 3:20pm, arrives at Skene St (3:45pm, Bay 5)

Ford's Bus Travellers: Students taking a Ford's bus to NDC should transfer to Bus 30 to and from Emmaus.

Jacobson's Bus Travellers: Students arriving on a Jacobson's bus should use Buses 1, 22, or 33 to and from Emmaus.

School Bus Program 2025-Only Travelers

This may include some students who access the STS (public service) before accessing the School Bus Programme Buses at Skene Street Interchange

Options include:

- Morning - Bus 1 (8:25am from Bay 1) | Afternoon - departs 3:25pm, arrives at Skene St (3:45pm, Bay 1)
- Morning - Bus 22 (8:25am from Bay 4) | Afternoon - departs 3:20pm, arrives at Skene St (3:35pm, Bay 4)
- Morning - Bus 30 (8:35am from Bay 9) | Afternoon - departs 3:25pm, arrives at Skene St (3:40pm, Bay 10)
- Morning - Bus 33 (8:30am from Bay 2) | Afternoon - departs 3:20pm, arrives at Skene St (3:45pm, Bay 5)

STS (Public Service) Eligible Travellers (Town Students)

Mooroopna Students:

- Morning - Bus C from Billy's Bakehouse departs 8:10am | Afternoon - departs Emmaus at 3:25pm, arriving at Barastoc Mooroopna 3:50pm.

To identify which STS bus will bring them to Skene Street in time to connect with Bus C, students should consult the NDC school website.

Dyson's Bus Services Eligible Travellers:

The following buses run from Skene Street Interchange to Emmaus Campus and are managed by Dyson's. Details are as follows:

- Morning – Bus F - Kingfisher Bay 7 (8:10am) | Afternoon (arrives Skene St. 3:30pm, Bay 7)
- Morning – Bus Q - Kialla Bay 9 (8:05am) | Afternoon (arrives Skene St. 3:45pm, Bay 9)
- Morning – Bus S - Poplar Bay 3 (8:10am) | Afternoon (arrives Skene St. 4:00pm, Bay 9)
- Morning – Bus T - Gordon Drive Bay 8 (8:15am) | Afternoon (arrives Skene St. 3:50pm, Bay 8)

Additional Dyson's bus information for Emmaus Campus services is available through our [College website](#) or [GSSC website](#).

Please direct any further questions to:
Linda Piastri, Student Transport Officer
Greater Shepparton Secondary College
Phone: 03 5891 2000
Email: bus@gssc.vic.edu.au